

# PARTS CATALOG

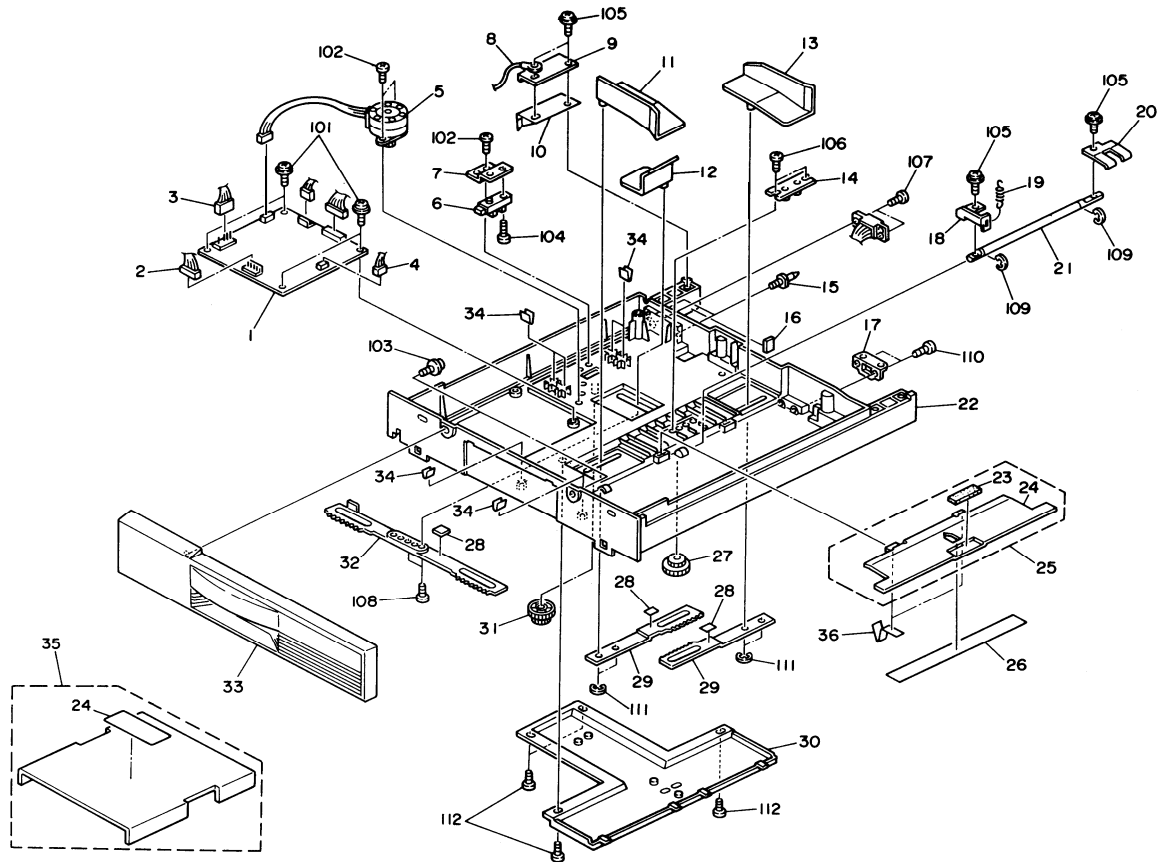
## INTRODUCTION

This chapter instructs you the numbers and names of this parts on this machine.

## INDEX to PARTS CATALOG

1. Duplex Unit 1(A491) .....	2
2. DuplexUnit2(A491) .....	4
3. DuplexUnit3(A491) .....	6
4. DuplexUnit4(A491) .....	8
5. Duplex Main Board (A491) .....	10
6. Duplex Harness (A491) .....	12
7. Sensor Harness (A491) .....	14
8. Decal and Document (A491)....	16
<b>Parts Index</b> .....	<b>19</b>

# 1. DUPLEX UNIT 1 (A491)

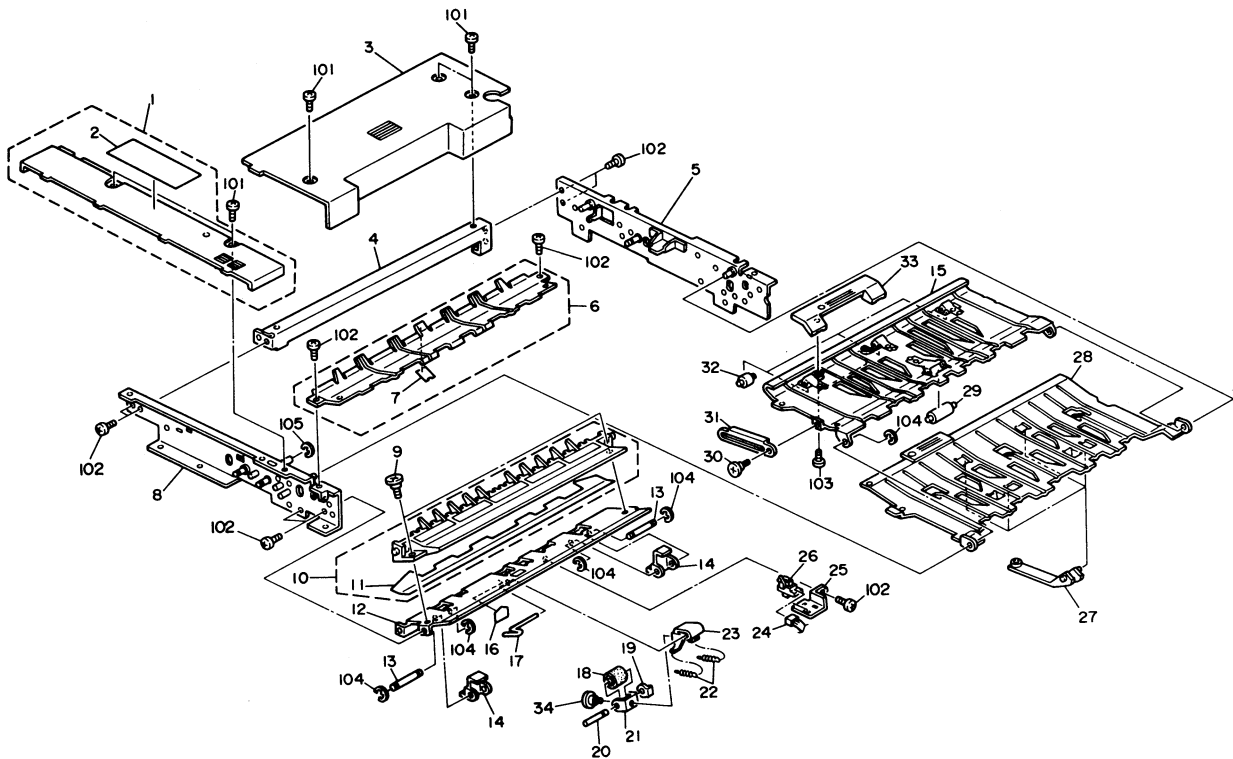


## 1. DUPLEX UNIT 1 (A491)

Index No.	Part No.	Description	Q'ty Per Assembly
1	A491 5121	Duplex Control Board	1
2	A491 5205	Transport Motor - DC30V	1
3	A491 5300	Duplex Harness - 115V	1
3	A491 5306	Duplex Harness - 220/240V	1
4	A491 5301	Sensor Harness	1
5	A491 5210	Jog Motor - DC24V	1
6	AW02 0022	Photointerruptor	1
7	A491 4660	Jog Sensor Bracket	1
8	A491 5319	Duplex Harness	1
9	A491 4892	Spring Holder	1
10	A491 4891	Spring Plate	1
11	AF01 6026	Front Jog Fence	1
12	AF01 7005	End Jog Fence	1
13	AF01 6027	Rear Jog Fence	1
14	A491 4650	Jog Registration Plate	1
15	AA14 3269	Guide Pin - M6	2
16	AA16 2035	Cushion - Paper Tray	1
17	AG07 0004	Magnetic Catch	1
18	A491 4690	Bottom Plate Hook	1
19	AA06 0257	Spring - Bottom Plate Clutch	1
20	A491 4694	Pressure Plate - Bottom Plate	1
21	AA14 0291	Bottom Plate Shaft	1
22	A491 4611	Duplex Tray	1
23	AF01 3002	Bottom Plate Pad	1
24	A491 4915	Dust Cover Decal	1
25	A491 4685	Bottom Plate	1
26	A491 4686	Cushion - Tray Bottom Plate	1
27	AB01 7165	Gear - 16Z/22Z	1
28	A491 4647	Cushion - Side Fence Rack	3
29	A491 4640	Side Fence Rack	2
30	A491 4630	Bottom Cover	1
31	AB01 7164	Gear - 21Z/64Z	1
32	A491 4645	End Fence Rack	1
33	A491 4954	Front Cover - LT	1
33	A491 4955	Front Cover - A4	1

Index No.	Part No.	Description	Q'ty Per Assembly
3 4	A491 4890	Harness Clamp Plate	6
35	A491 4634	Dust Cover	1
36	A491 4691	Spring Plate - Tray Bottom Plate	1
101	0951 3005W	Philips Screw with Flat Washer - M3x5	
102	0313 0050W	Philips Pan Head Screw - M3x5	
103	0414 0082F	Philips Truss Head Screw - M4x8	
104	0314 0100W	Philips Pan Head Screw - M4x10	
105	0951 3006B	Philips Screw with Flat Washer - M3x6	
106	0343 0060W	Philips Pan Head Screw - M3x6	
107	0313 0060W	Philips Pan Head Screw - M3x6	
108	0413 0062W	Tapping Screw - M3x6	
109	0720 0040E	Retaining Ring - M4	
110	0434 0122W	Pan Head Self-tapping Screw - M4x12	
111	0805 0073	Retaining Ring - M5	

## 2. DUPLEX UNIT 2 (A491)

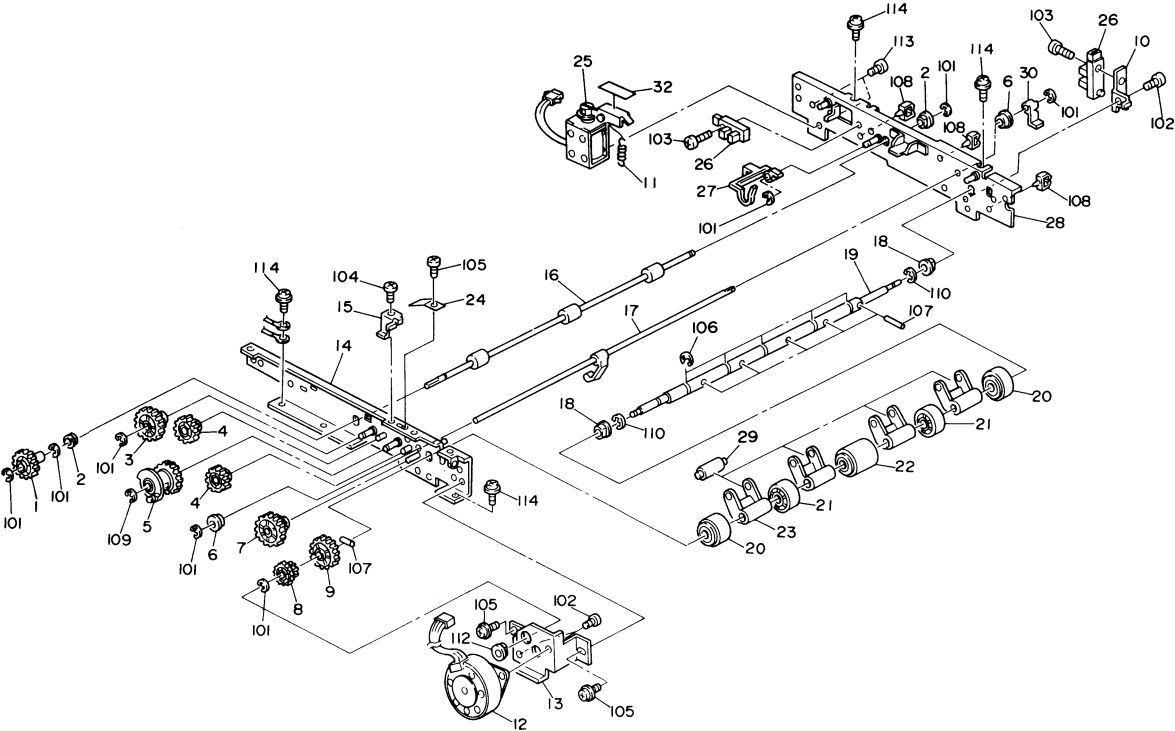


## 2. DUPLEX UNIT 2 (A491)

Index No.	Part No.	Description	Q'ty Per Assembly
1	A491 4909	Upper Front Cover	1
2	A491 4913	Decal - Removing Misfeed Paper	1
3	A491 4625	Upper Left Cover	1
4	A491 4720	Duplex Stay	1
5	A491 4680	Rear Side Plate	1
6	A491 4759	Guide Plate	1
7	A491 4761	Guide Plate Mylar -0.188x12x25	1
8	A491 4670	Front Side Plate	1
9	AA14 3287	Stepped Screw - M3	2
10	A491 4789	Inverter Guide Plate	1
11	A491 4790	Mylar Seal - Inverter Guide Plate	1
12	A491 4770	Guide Plate Paper Feed	1
13	AA14 5119	Jog Plate Shaft	2
14	A491 4786	Jog Plate	2
15	A491 4730	Upper Guide Plate	1
16	A491 4780	Mylar Seal - 0.1x22x24	1
17	A491 4817	Guide Pin - Separation Roller	1
18	AF03 2003	Separation Roller	1
19	5447 2681	Snap Ring	1
20	AA14 5117	Separation Roller Shaft	1
21	A491 4810	Separation Roller Holder	1
22	AA06 0245	Separation Roller Spring	2
23	A491 4815	Separation Roller Bracket	1
24	A491 5302	Intermediate Harness	1
25	A491 4785	Bracket - Paper Entrance Sensor	1
26	AW02 0023	Paper Entrance Sensor	1
27	A334 4753	Paper Flatenner	4
28	A491 4750	Lower Guide Plate	1
29	AF02 2071	Large Driven Roller	1
30	5447 2768	Stepped Screw - M3	1
31	A491 4740	Guide Plate Link	1
32	AF02 2043	Small Driven Roller	3
33	AG05 1067	Paper Removal Handle	1
34	AA14 3076	Stepped Screw - M4	1

Index No.	Part No.	Description	Q'ty Per Assembly
101	0353 0050F	Tapping Screw - M3x5	
102	0313 0050W	Philips Pan Head Screw - M3x5	
103	0413 0062W	Tapping Screw - M3x6	
104	0720 0030E	Retaining Ring - M3	
105	0720 0030W	Retainina Ring - M3	

### 3. DUPLEX UNIT 3 (A491)

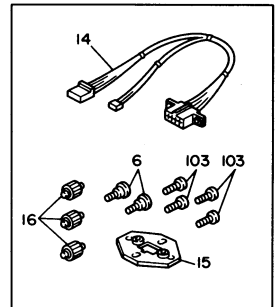
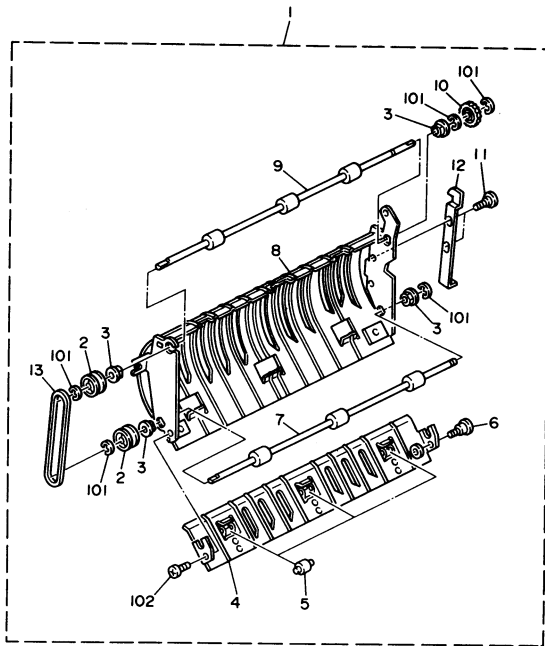


### 3. DUPLEX UNIT 3 (A491)

Index No.	Part No.	Description	Q'ty Per Assembly
1	AB01 3425	Gear - 28Z	1
2	AA08 0022	Bushing - 4x7x5mm	2
3	AB01 7162	Gear - 14Z/36Z	1
4	AB01 3426	Gear - 22Z	2
5	AB04 0008	Bottom Plate Clutch	1
6	5443 2668	Bushing - 4x6x7mm	2
7	AB01 7163	Gear - 14Z/28Z	1
8	AB01 7161	Gear - 14Z/45Z	1
9	AB01 3424	Gear - 28Z	1
10	A491 4710	Bracket - Paper End Sensor	1
11	5442 3233	Spring - Drive Wheel	1
12	A491 5205	Transport Motor - DC30V	1
13	A491 4700	Transport Motor Bracket	1
14	A491 4670	Front Side Plate	1
15	A491 4705	Stopper - Bottom Plate Clutch	1
16	AF02 0153	Paper Transport Roller	1
17	A491 4715	Paper End Actuator	1
18	5304 1639	Bushing - 8mm	2
19	AA14 0292	Feed Roller Shaft	1
20	AF02 0156	Stack Roller	2
21	AF02 2045	Stack Roller Holder	2
22	AF03 1008	Feed Roller	1
23	A491 4824	Paper Support	4
24	A334 4672	Grounding Plate	1
25	A491 4832	Fusing Gate Solenoid	1
26	AW02 0022	Photointerruptor	2
27	AA11 1010	Paper Entrance Feeler	1
28	A491 4680	Rear Side Plate	1
29	AF02 2071	Large Driven Roller	4
30	AA11 1011	Paper End Feeler	1
32	A491 4831	Mylar Seal -0.188x9x13	1

Index No.	Part No.	Description	Q'ty Per Assembly
101	0720 0030E	Retaining Ring - M3	
102	0313 0050W	Philips Pan Head Screw - M3x5	
103	0314 0100W	Philips Pan Head Screw - M4x10	
104	0353 0050W	Tapping Screw - M3x5	
105	0951 3005W	Philips Screw with Flat Washer - M3x5	
106	0720 0080E	Retaining Ring - M8	
107	0632 0140E	Parallel Pin - M2x14	
108	1105 0199	Clamp	
109	0720 0040E	Retaining Ring - M4	
110	0720 0060E	Retaining Ring - M6	
111	0313 0030B	Philips Pan Head Screw - M3x3	
112	0805 3366	Bushing - 6mm	
113	0313 0040B	Philips Pan Head Screw - M3x4	
114	0951 4006W	Philips Screw With Flat Washer - M4x6	

## 4. DUPLEX UNIT 4 (A491)





#### 4. DUPLEX UNIT 4 (A491)

Index No.	Part No.	Description	Q'ty Per Assembly
1	A491 4551	Turn Guide Plate Ass'y	1
2	A491 4885	Turn Roller Pulley	2
3	AA08 0022	Bushing - 4x7x5mm	4
4	A491 4870	Lower Turn Guide Plate	1
5	AF02 2043	Small Driven Roller	3
6	AA14 3070	Shoulder Screw - M2x2	3
7	AF02 0195	Upper Turn Roller	1
8	A491 4860	Upper Turn Guide Plate	1
9	AF02 0155	Lower Turn Roller	1
10	AB01 3427	Gear - 14Z	1
11	5447 2768	Stepped Screw - M3	2
12	A491 4880	Fusing Gate Lever	1
13	AA04 2004	Turn Roller Drive Belt	1
14	A491 5391	Duplex Realy Harness	1
15	A491 4835	Connector Bracket	1
16	AF02 2032	Turn Driven Roller	3

Index No.	Part No.	Description	Q'ty Per Assembly
101	0720 0030E	Retaining Ring - M3	
102	0313 0050W	Philips Pan Head Screw - M3x5	
103	0313 0060W	Philips Pan Head Screw - M3x6	

## 5. DUPLICATE MAIN BOARD (A491)

### CAPACITOR

SYMBOL NO.	INDEX NO.
C701	126
C702	128
C703	130
C704	124
C705	126
C706	129
C707	129
C108	129
C709	129
C710	128

SYMBOL NO.	INDEX NO.
C711	128
C713	130
C715	129
C716	125
C717	125
C718	131
C719	121

SYMBOL NO.	INDEX NO.
C722	131
C723	122
C724	131
C727	127
C728	131
C729	127
C730	129
C731	129
C732	123

### CONNECTOR

SYMBOL NO.	INDEX NO.
CN701	105
CN702	103
CN703	104
CN704	106
CN705	102
CN706	101

### DIODE

SYMBOL NO.	INDEX NO.
D700	109
D701	109
D704	111
D705	111

### DIP SWITCH

SYMBOL NO.	INDEX NO.
DPS700	107

### NOISE FILTER

SYMBOL NO.	INDEX NO.
EMISF	120

### IC

SYMBOL NO.	INDEX NO.
IC701	112
IC702	1
IC703	114
IC704	113
IC705	115

### COIL

SYMBOL NO.	INDEX NO.
L701	132

### OSCILLATOR

SYMBOL NO.	INDEX NO.
OSC700	116

### RESISTOR

SYMBOL NO.	INDEX NO.
R700	141
R701	141
R706	140
R707	140
R708	140
R709	140
R711	137
R712	137
R713	137
R714	137

SYMBOL NO.	INDEX NO.
R715	135
R716	138
R717	139
R718	133
R719	142
R720	140
R721	135
R722	135
R723	140
R724	117

SYMBOL NO.	INDEX NO.
R725	117
R726	138
R727	136
R728	135
R731	135
R732	135
R733	135
R734	140
R735	140
R736	135

SYMBOL NO.	INDEX NO.
R737	135
R742	135
R743	134
R744	143

### RESISTOR ARRAY

SYMBOL NO.	INDEX NO.
RAY700	119
RAY701	118

### ZENER DIODE

SYMBOL NO.	INDEX NO.
ZD700	110

### TRANSISTOR

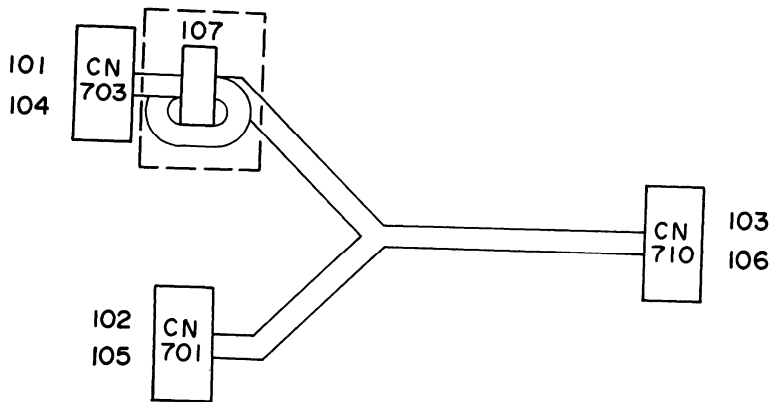
SYMBOL NO.	INDEX NO.
Q700	108

## 5. DUPLEX MAIN BOARD (A491)

Index No.	Part No.	Description	Q'ty Per Assembly
*	A491 5121	Duplex Control Board	1
1	A491 5105	IC - $\mu$ PD7811HG-287	1
101	1102 4203	CT Header - 4P	
102	1102 4205	Connector - 6P	
103	1102 4497	Connector - 13P	
104	1103 0441	Connector - 4P	
105	1103 1770	Connector - 4P	
106	1103 1772	Pin Header - 6P	
107	1204 1482	DIP Switch	
108	1400 0208	Transistor - 2SC945	

Index No.	Part No.	Description	Q'ty Per Assembly
109	1401 0815	Diode -1S1588	
110	1402 0277	Zener Diode - 1Z12	
111	1402 0841	Diode - RK34	
112	1407 1348	IC - TD62304AP	
113	1407 1535	IC - TD62308AP	
114	1407 3478	IC - SLA7024M	
115	1408 0258	IC - AN6914	
116	1503 0071	Oscillator - 12 MHz	
117	1600 1295	Resistor -0.82 OHM 2W $\pm$ 5%	
118	1601 7354	Resistor Array - 10K OHM	
119	1601 7374	Resistor Array - 4.7K OHM	
120	1602 7032	Noise Filter - 220pF 250V 7A	
121	1604 1363	Capacitor - 10 $\mu$ F $\pm$ 20% 25V	
122	1604 1366	Capacitor - 47 $\mu$ F $\pm$ 20% 25V	
123	1604 1379	Capacitor - 2.2 $\mu$ F $\pm$ 20% 50V	
124	1604 1386	Capacitor - 100 $\mu$ F $\pm$ 2% 50V	
125	1606 1129	Capacitor - 30pF $\pm$ 5% 50V	
126	1606 1329	Capacitor - 330pF $\pm$ 10% 50V	
127	1606 1330	Capacitor - 470pF $\pm$ 10% 50V	
128	1606 1333	Capacitor - 2200pF -20% +80% 50V	
129	1606 1336	Capacitor - 10000pF -20% +80% 50V	
130	1606 1396	Capacitor - 0.1 $\mu$ F 25V	
131	1606 1458	Capacitor - 0.1 $\mu$ F -20% +80% 50V	
132	1607 0113	SN Coil - 110 $\mu$ F 3A	
133	1611 4101	Resistor -100 OHM 1/4T $\pm$ 5%	
134	1611 4102	Resistor -1K OHM 1/4T $\pm$ 5%	
135	1611 4103	Resistor - 10k OHM 1/4T $\pm$ 5%	
136	1611 4105	Resistor -1M OHM 1/4T $\pm$ 5%	
137	1611 4223	Resistor - 22k OHM 1/4T $\pm$ 5%	
138	1611 4242	Resistor - 2.4k OHM 1/4T $\pm$ 5%	
139	1611 4391	Resistor -390 OHM 1/4T $\pm$ 5%	
140	1611 4472	Resistor - 4.7K OHM 1/4W $\pm$ 5%	
141	1611 4473	Resistor - 47K OHM 1/4T $\pm$ 5%	
142	1611 4511	Resistor -510 OHM 1/4T +5%	
143	1611 4513	Resistor -51K OHM 1/4T	

6.DUPLEX HARNESS (A491)

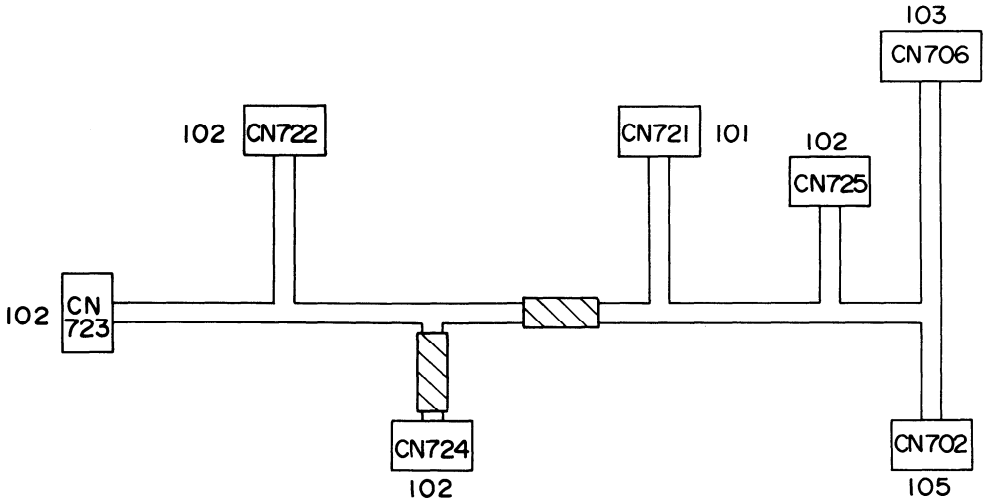


## 6. DUPLEX HARNESS (A491)

Index No.	Part No.	Description	Q'ty Per Assembly
*	A491 5300	Duplex Harness - 115V	1
*	A491 5306	Duplex Harness - 220/240V	1

Index No.	Part No.	Description	Q'ty Per Assembly
101	1100 1247	Terminal	
102	<b>1100 1329</b>	Contact	
103	1100 1534	Pin Contact	
104	1102 1831	Connector - 4P	
105	1102 1984	Connector - 4P	
106	1102 4800	Connector - 8P	
107	1607 0272	Ferrite Core	

7. SENSOR HARNESS (A491)



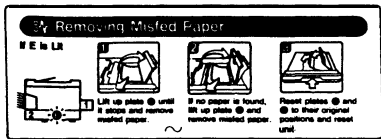
## 7. SENSOR HARNESS (A491)

Index No.	Part No.	Description	Q'ty Per Assembly
	A491 5301	Sensor Harness	1

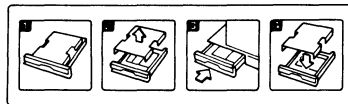
Index No.	Part No.	Description	Q'ty Per Assembly
101	1102 4213	Connector - 2P	
102	1102 4214	CT Receptacle - 3P	
103	1102 4215	Connector - 4P	
104	1102 4484	Connector - 13P	

# 8. DECAL AND DOCUMENT (A491)

1



2





**8. DECAL AND DOCUMENT (A491)**

Index No.	Part No.	Description	Q'ty Per Assembly
1	A491 4913	Decal - Removing Misfeed Paper	1
1	A491 4914	Multi Decal - Removing Misfeed Paper	1
2	A491 4915	Dust Cover Decal	1

Index No.	Part No.	Description	Q'ty Per Assembly

# **PARTS INDEX**

Part No.	Description	Page and Index No.
A491 4551	Turn Guide Plate Ass'y	9- 1
A491 4611	Duplex Tray	3-22
A491 4625	Upper Left Cover	5- 3
A491 4630	Bottom Cover	3-30
A491 4634	Dust Cover	3-35
A491 4640	Side Fence Rack	3-29
A491 4645	End Fence Rack	3-32
A491 4647	Cushion - Side Fence Rack	3-28
A491 4650	Jog Registration Plate	3- 14
A491 4660	Jog Sensor Bracket	3- 7
A491 4670	Front Side Plate	5- 8
A491 4670	Front Side Plate	7- 14
A491 4680	Rear Side Plate	5- 5
A491 4680	Rear Side Plate	7-28
A491 4685	Bottom Plate	3-25
A491 4686	Cushion - Tray Bottom Plate	3-26
A491 4690	Bottom Plate Hook	3- 18
A491 4691	Spring Plate - Tray Bottom Plate	3-36
A491 4694	Pressure Plate - Bottom Plate	3-20
A491 4700	Transport Motor Bracket	7- 13
A491 4705	Stopper- Bottom Plate Clutch	7- 15
A491 4710	Bracket-Paper End Sensor	7- 10
A491 4715	Paper End Actuator	7- 17
A491 4720	Duplex Stay	5- 4
A491 4730	Upper Guide Plate	5- 15
A491 4740	Guide Plate Link	5-31
A491 4750	Lower Guide Plate	5-28
A491 4759	Guide Plate	5- 6
A491 4761	Guide Plate Mylar - 0.188x12x25	5- 7
A491 4770	Guide Plate Paper Feed	5- 12
A491 4780	Mylar Seal - 0.1x22x24	5- 16
A491 4785	Bracket -Paper Entrance Sensor	5-25
A491 4786	Jog Plate	5- 14
A491 4789	Inverter Guide Plate	5- 10
A491 4790	Mylar Seal - Inverter Guide Plate	5- 11

Part No.	Description	Page and Index No.
A491 4810	Separation Roller Holder	5-21
A491 4815	Separation Roller Bracket	5-23
A491 4817	Guide Pin-Separation Roller	5- 17
A491 4824	Paper Support	7-23
A491 4831	Mylar Seal - 0.188x9x13	7-32
A491 4832	Fusing Gate Solenoid	7-25
A491 4835	Connector Bracket	9- 15
A491 4860	Upper Turn Guide Plate	9- 8
A491 4870	Lower Turn Guide Plate	9- 4
A491 4880	Fusing Gate Lever	9- 12
A491 4885	Turn Roller Pulley	9- 2
A491 4890	Harness Clamp Plate	3-34
A491 4891	Spring Plate	3- 10
A491 4892	Spring Holder	3- 9
A491 4909	Upper Front Cover	5- 1
A491 4913	Decal - Removing Misfeed Paper	5- 2
A491 4913	Decal - Removing Misfeed Paper	17- 1
A491 4914	Multi Decal - Removing Misfeed Paper	17- 1
A491 4915	Dust Cover Decal	3-24
A491 4915	Dust Cover Decal	17- 2
A491 4954	Front Cover - LT	3-33
A491 4955	Front Cover - A4	3-33
A491 5105	IC-μPD7811 HG-287	11- 1
A491 5121	Duplex Control Board	3- 1
A491 5121	Duplex Control Board	11- *
A491 5205	Transport Motor - DC30V	3- 2
A491 5205	Transport Motor - DC30V	7- 12
A491 5210	Jog Motor - DC24V	3- 5
A491 5300	Duplex Harness - 115V	3- 3
A491 5300	Duplex Harness - 115V	13- *
A491 5301	Sensor Harness	3- 4
A491 5301	Sensor Harness	15- *
A491 5302	Intermediate Harness	5-24
A491 5306	Duplex Harness - 220/240V	3- 3
A491 5306	Duplex Harness - 220/240V	13- *

Part No.	Description	Page and Index No.
A491 5319	Duplex Harness	3- 8
A491 5391	Duplex Realy Harness	9- 14

Part No.	Description	Page and Index No.
AA04 2004	Turn Roller Drive Belt	9- 13
AA16 0245	Separation Roller Spring	5-22
AA06 0257	Spring - Bottom Plate Clutch	3- 19
AA08 0022	Bushing - 4x7x5mm	7- 2
AA08 0022	Bushing - 4x7x5mm	9- 3
AA11 1010	Paper Entrance Feeler	7-27
AA11 1011	Paper End Feeler	7-30
AA14 0291	Bottom Plate Shaft	3-21
AA14 0292	Feed Roller Shaft	7- 19
AA14 3070	Shoulder Screw - M2x2	9- 6
AA14 3076	Stepped Screw - M4	5-34
AA14 3269	Guide Pin - M6	3- 15
AA14 3287	Stepped Screw - M3	5- 9
AA14 5117	Separation Roller Shaft	5-20
AA14 5119	Jog Plate Shaft	5- 13
AA16 2035	Cushion - Paper Tray	3- 16
AB01 3424	Gear - 28Z	7- 9
AB01 3425	Gear - 28Z	7- 1
AB01 3426	Gear - 22Z	7- 4
AB01 3427	Gear - 14Z	9- 10
AB01 7161	Gear - 14Z/45Z	7- 8
AB01 7162	Gear - 14Z/36Z	7- 3
AB01 7163	Gear - 14Z/28Z	7- 7
AB01 7164	Gear - 21Z/64Z	3-31
AB01 7165	Gear - 16Z/22Z	3-27
AB04 0008	Bottom Plate Clutch	7- 5
AF01 3002	Bottom Plate Pad	3-22
AF01 6026	Front Jog Fence	3- 11
AF01 6027	Rear Jog Fence	3- 13
AF01 7005	End Jog Fence	3- 12
AF02 0153	Paper Transport Roller	7- 16
AF02 0155	Lower Turn Roller	9- 9
AF02 0156	Stack Roller	7- 20
AF02 0195	Upper Turn Roller	9- 7
AF02 2032	Turn Driven Roller	9- 16

Part No.	Description	Page and Index No.
AF02 2043	Small Driven Roller	5-32
AF02 2043	Small Driven Roller	9- 5
AF02 2045	Stack Roller Holder	7-21
AF02 2071	Large Driven Roller	5-29
AF02 2071	Large Driven Roller	7-29
AF03 1008	Feed Roller	7-22
AF03 2003	Separation Roller	5- 18
AG05 1067	Paper Removal Handle	5-33
AG07 0004	Magnetic Catch	3- 17
AW02 0022	Photointerruptor	3- 6
AW02 0022	Photointerruptor	7-26
AW02 0023	Paper Entrance Sensor	5-26
A334 4672	Grounding Plate	7-24
A334 4753	Paper Flatenner	5-27
5304 1639	Bushing - 8mm	7- 18
5442 3233	Spring - Drive Wheel	7- 11
5443 2668	Bushing - 4x6x7mm	7- 6
3447 2681	Snap Ring	5- 19
5447 2768	Stepped Screw - M3	5-30
5447 2768	Stepped Screw - M3	9- 11

Part No.	Description	Page and Index No.
0313 0030B	Philips Pan Head Screw - M3x3	7-111
0313 0040B	Philips Pan Head Screw - M3x4	7-113
0313 0050W	Philips Pan Head Screw - M3x5	3-102
0313 0050W	Philips Pan Head Screw - M3x5	5-102
0313 0050W	Philips Pan Head Screw - M3x5	7-102
0313 0050W	Philips Pan Head Screw - M3x5	9-102
0313 0060W	Philips Pan Head Screw - M3x6	3-107
0313 0060W	Philips Pan Head Screw - M3x6	9-103
0314 0100W	Philips Pan Head Screw - M4x10	3-104
0314 0100W	Philips Pan Head Screw - M4x10	7-103
0343 0060W	Philips Pan Head Screw - M3x6	3-106
0353 0050F	Tapping Screw - M3x5	5-101
0353 0050W	Tapping Screw - M3x5	7-104
0413 0062W	Tapping Screw - M3x6	3-108
0413 0062W	Tapping Screw - M3x6	5-103
0414 0082F	Philips Truss Head Screw - M4x8	3-103
0434 0122W	Pan Head Self-tapping Screw - M4x12	3-110
0632 0140E	Parallel Pin - M2x14	7-107
0720 0030E	Retaining Ring - M3	5-104
0720 0030E	Retaining Ring - M3	7-101
0720 0030E	Retaining Ring - M3	9-101
0720 0030W	Retaining Ring - M3	5-105
0720 0040E	Retaining Ring - M4	3-109
0720 0040E	Retaining Ring - M4	7-109
0720 0060E	Retaining Ring - M6	7-110
0720 0080E	Retaining Ring - M8	7-106
0805 0073	Retaining Ring - M5	3-111
0805 3366	Bushing - 6mm	7-112
0951 3005W	Philips Screw with Flat Washer - M3x5	3-101
0951 3005W	Philips Screw with Flat Washer - M3x5	7-105
0951 3006B	Philips Screw with Flat Washer - M3x6	3-105
0951 4006W	Philips Screw With Flat Washer - M4x6	7-114
1100 1247	Terminal	13-101
1100 1329	Contact	13-102
1100 1534	Pin Contact	13-103

Part No.	Description	Page and Index No.
1102 1831	Connector - 4P	13-104
1102 1984	Connector - 4P	13-105
1102 4203	CT Header - 4P	11-101
1102 4205	Connector - 6P	11-102
1102 4213	Connector - 2P	15-101
1102 4214	CT Receptacle - 3P	15-102
1102 4215	Connector-4P	15-103
1102 4484	Connector-13P	15-104
1102 4497	Connector-13P	11-103
1102 4800	Connector-8P	13-106
1103 0441	Connector-4P	11-104
1103 1770	Connector-4P	11-105
1103 1772	Pin Header-6P	11-106
1105 0199	Clamp	7-108
1204 1482	DIP Switch	11-107
1400 0208	Transistor-2SC945	11-108
1401 0815	Diode-1S1588	11-109
1402 0277	Zener Diode-1Z12	11-110
1402 0841	Diode-RK34	11-111
1407 1348	IC-TD62304AP	11-112
1407 1535	IC-TD62308AP	11-113
1407 3478	IC-SLA7024M	11-114
1408 0258	IC - AN6914	11-115
1503 0071	Oscillator-12MHz	11-116
1600 1295	Resistor -0.82 OHM 2W ±5%	11-117
1601 7354	Resistor Array - 10K OHM	11-118
1601 7374	Resistor Array - 4.7K OHM	11-119
1602 7032	Noise Filter - 220pF 250V 7A	11-120
1604 1363	Capacitor - 10µF ±20% 25V	11-121
1604 1366	Capacitor - 47µF ±20% 25V	11-122
1604 1379	Capacitor - 2.2µF ±20% 50V	11-123
1604 1386	Capacitor - 100µF ±20% 50V	11-124
1606 1129	Capacitor - 30pF ±5% 50V	11-125
1606 1329	capacitor - 330pF ±10% 50V	11-126
1606 1330	Capacitor - 470pF ±10% 50V	11-127

Part No.	Description	Page and Index No.
1606 1333	Capacitor -2200pF-20% +80%50V	11-128
1606 1336	Capacitor -10000pF -20% +80%50V	11-129
1606 1396	Capacitor - <b>0.1µF 25V</b>	<b>11-130</b>
<b>1606 1458</b>	Capacitor - 0.1µF-20% <b>+80% 50V</b>	11-131
<b>1607 0113</b>	SN Coil - 110µF 3A	11-132
1607 0272	Ferrite Core	13-107
1611 4101	Resistor -100 OHM 1/4T ±5%	11-133
1611 4102	Resistor -1K OHM 1/4T ±5%	<b>11-134</b>
<b>1611 4103</b>	Resistor - 10k OHM 1/4T ±5%	<b>11-135</b>
<b>1611 4105</b>	Resistor -1M OHM 1/4T ±5%	<b>11-136</b>
<b>1611 4223</b>	Resistor - 22k OHM 1/4T ±5%	<b>11-137</b>
<b>1611 4242</b>	Resistor - 2.4k OHM 1/4T ±5%	<b>11-138</b>
<b>1611 4391</b>	Resistor - 390 OHM 1/4T ±5%	<b>11-139</b>
<b>1611 4472</b>	Resistor - 4.7K OHM 1/4W ±5%	<b>11-140</b>
<b>1611 4473</b>	Resistor - 47K OHM 1/4T ±5%	<b>11-141</b>
<b>1611 4511</b>	Resistor -510 OHM 1/4T ±5%	<b>11-142</b>
<b>1611 4513</b>	Resistor -51K OHM 1/4T	<b>11-143</b>

**AD 130 (A 491)**